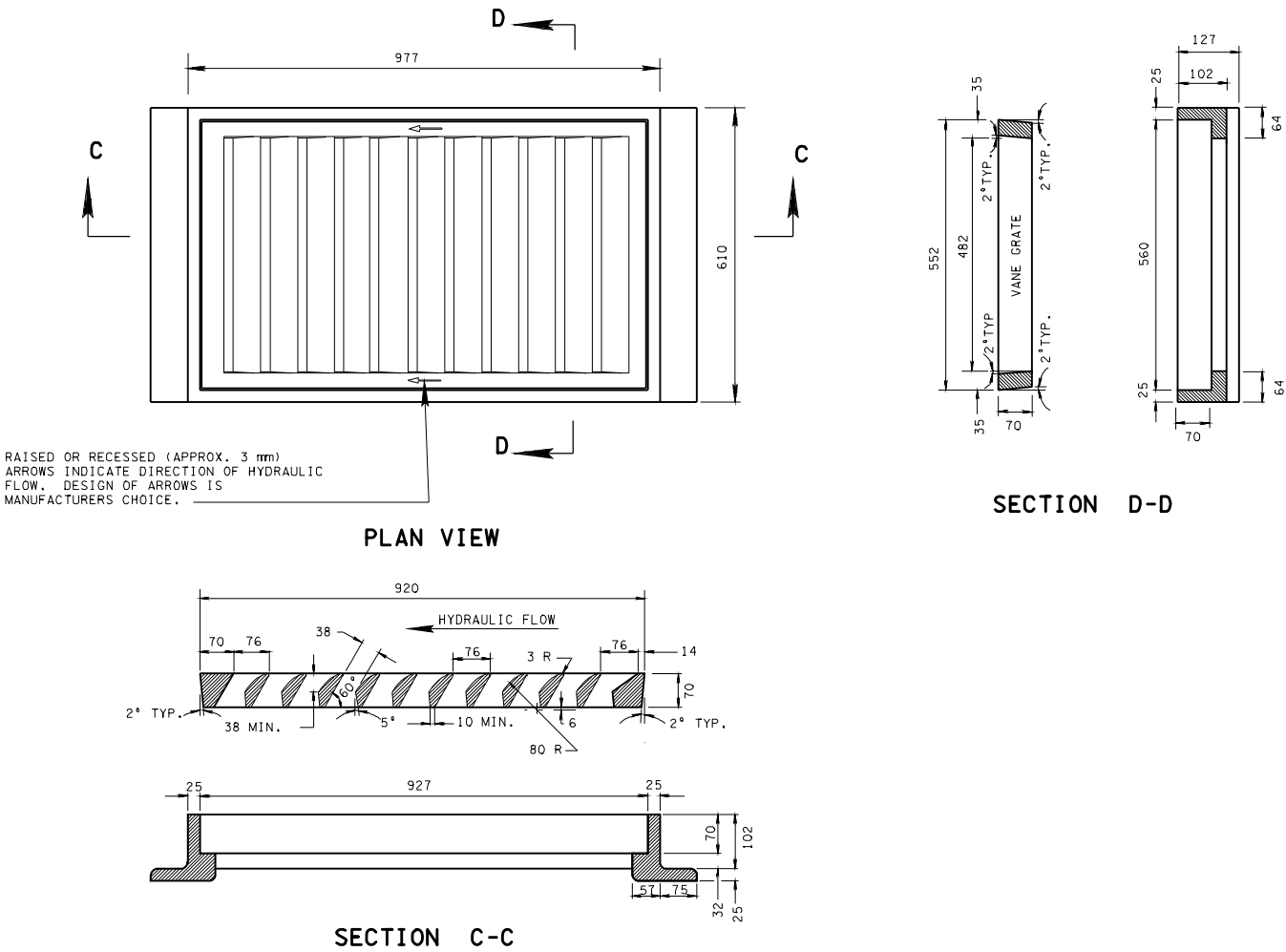
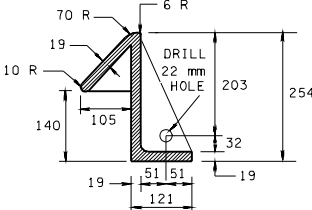
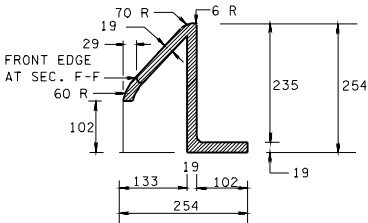
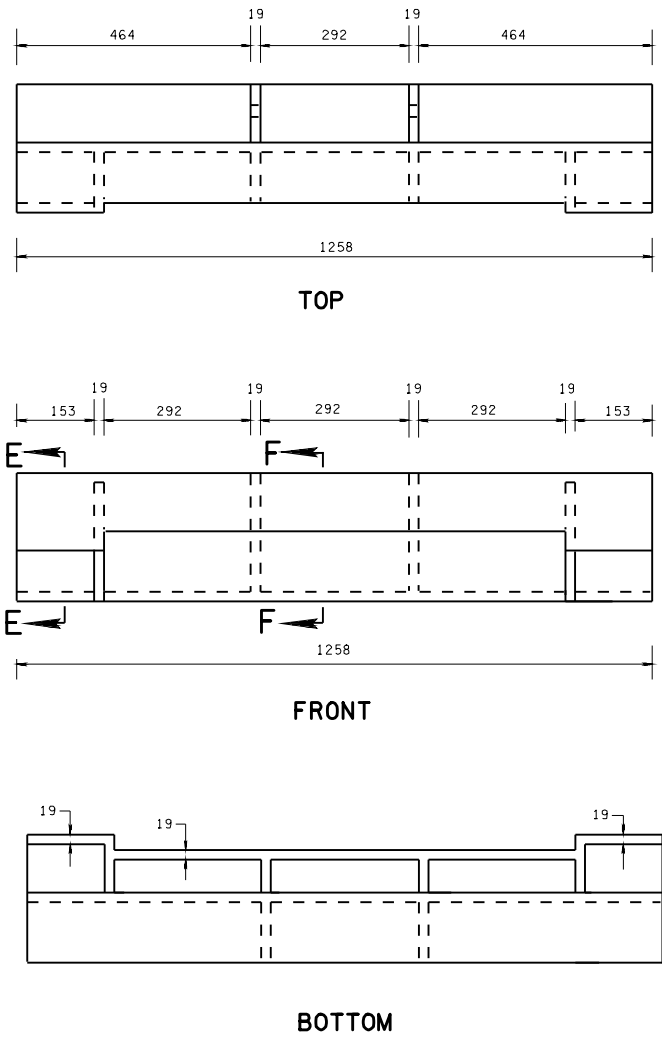


- REV. 11-1-95: CHANGED TO METRIC.
- REV. 7-29-96: MADE MINOR DIMENSIONING CORRECTIONS.
- REV. 10-26-00: CHANGED SHEET NAME AND GENERAL NOTE ③.
- REV. 5-27-01: CHANGED GENERAL NOTE ④.

GRATE AND FRAME DETAILS



CURB INLET CASTING



GENERAL NOTES

- A

WHEN A 150 mm MOUNTABLE CURB IS REQUIRED, USE THIS DRAWING ON ALL VARIATIONS OF NUMBER 25, 26 AND 27 CATCH BASINS CONTAINED IN THIS SECTION OF THE STANDARD DRAWINGS.
- B

FOR CLEARNESS, ALL CORNERS ARE SHOWN ON THIS DRAWING BY STRAIGHT LINES WITH THE EXCEPTION OF THE 25 mm RADIUS AT THE TOP OF FACE OF CURB. ALL INSIDE CORNERS SHOULD BE MADE WITH 13 mm X 13 mm FILLETS OR 19 mm RADIUS FILLETS FOR EASE IN MOLDING.
- C

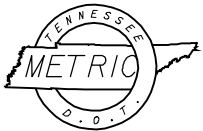
IF PAID FOR SEPARATELY, CAST IRON USED IN CASTINGS IS TO BE PAID FOR UNDER ITEM NO. 611M03.04 GRAY IRON CASTINGS (CATCH BASIN) PER KILOGRAM.
- D

IF CATCH BASIN IS PAID FOR UNDER EACH, THEN COST OF CAST IRON USED IN CASTINGS IS TO BE PAID FOR UNDER THE SPECIFIC ITEM BID FOR THAT CATCH BASIN. SEE STANDARD DRAWINGS FOR TYPE 25, 26, AND 27 CATCH BASINS FOR APPLICABLE PAY ITEMS FOR EACH TYPE OF CATCH BASIN.

WEIGHTS

(SINGLE GRATE CATCH BASIN)	
FRAME -----	120 kg
GRATE -----	113 kg
CURB INLET ----	98 kg
* TOTAL -----	331 kg

* NOTE: WEIGHT OF TWO GRATES = 662 kg



ALL UNITS ARE IN MILLIMETERS
UNLESS NOTED OTHERWISE.

MINOR REVISION -- FHWA
APPROVAL NOT REQUIRED.

STATE OF TENNESSEE
DEPARTMENT OF TRANSPORTATION

TYPE 'B'
CAST IRON FRAME, GRATE
& 150 mm MOUNTABLE INLET
DETAILS FOR NOS.
25, 26 & 27
TYPE CATCH BASINS

11-1-95

DM-CBB-12B